



Sailing

Notice of Race

7-17 September 2016, Rio de Janeiro, Brazil





NOTICE OF RACE

7-17 SEPTEMBER 2016, RIO DE JANEIRO, BRAZIL

The Organising Authority is World Sailing (formerly the International Sailing Federation or ISAF and incorporating the International Association for Disabled Sailing or IFDS) in conjunction with the Rio 2016 Organising Committee for the Olympic and Paralympic Games (Rio 2016).

1. RULES

Additional Rules referenced in the Notice of Race will be published on the World Sailing website (www.sailing.org), the International Paralympic Committee website (www.paralympic.org) or at the Rio 2016 website (www.rio2016.com).

- 1.1. The Paralympic Chapter of the IPC Handbook and other governing documents of the International Paralympic Committee (IPC) will apply.
- 1.2. The Qualification System as published in the Rio 2016 Paralympic Games Qualification Guide will apply.
- 1.3. The regatta will be governed by the rules as defined in The Racing Rules of Sailing (RRS).
- 1.4. As permitted by RRS 86.2, World Sailing has authorized that World Sailing Regulation 20.2.7 shall also apply to the Paralympic Games 2016. Advertising at the event shall be governed by the IPC Manufacturer Identification Guidelines for Rio 2016
- 1.5. No National Authority prescriptions will apply.
- 1.6. RRS Appendix P, Special Procedures for Rule 42, will apply.
- 1.7. The following class rules will apply:
 - 1.7.1 For the Three-Person Keelboat event (Sonar): this will be a Sonar Class Association Appendix B - Alternative Rules event.
 - 1.7.2 For the Two-Person Keelboat event (SKUD18): Class rule J.4 will apply.
 - 1.7.3 For the Single-Person Keelboat event (2.4 Norlin One Design): Boats shall comply with the 2.4 Norlin One Design class rules.
- 1.8. The Rio 2016 Paralympic Sailing Competition Equipment Regulations (ER) will apply.
- 1.9. The Rio 2016 Paralympic Sailing Competition Support Team Regulations (STR) will apply.
- 1.10. The Rio 2016 Paralympic Sailing Competition Athlete Media Guide (AMG) will apply.
- 1.11. Classification:
 - 1.11.1 The Rio 2016 Paralympic Games Classification Guide (PGCG) will apply.
 - 1.11.2 The Para World Sailing Functional Classification System & Procedures Manual (FCS) will apply.
 - 1.11.3 In the event of any conflict between the PGCG and the FCS, the PGCG will take precedence.
- 1.12. Part 1 of the Para World Sailing Race Management Manual 2013-2016 (RMM), including the addendum, will apply.
- 1.13. In all rules governing this regatta, both 'athlete' and 'competitor' mean a person competing in an event. The term 'support team' means coaches, team leaders and other support personnel.
- 1.14. In all rules governing this regatta;

[DP] denotes a rule for which the penalty is at the discretion of the International Jury;

[SP] denotes a rule for which a standard penalty may be applied by the race committee without a hearing or a discretionary penalty applied by the International Jury with a hearing; and

[NP] denotes a rule that shall not be grounds for protests by a boat. RRS 60.1(a) will be changed in the Sailing Instructions.
- 1.15. If there is a conflict between languages the English text will take precedence.

2. IDENTIFICATION AND ADVERTISING

- 2.1. Clothing and equipment worn or used by athletes and support personnel shall be in compliance with the IPC Manufacturer Identification Guidelines for the Rio 2016 Paralympic Games.
- 2.2. Except as permitted by NoR 3, a boat shall not display any form of publicity or propaganda, commercial or otherwise, including the display of a boat name, home port or club name.

3. ADDITIONAL IDENTIFICATION

- 3.1. [DP] Boats shall be required to carry 'look of the Games' logos, national country codes and flags on each side of the hull. These will be supplied by the Organising Authority and shall be applied under its direction.
- 3.2. Boats shall arrive with blank mainsails, and jibs where applicable, except for Class insignia as required by class rules. The Organising Authority will supply all other required markings for sails, which shall be applied under its direction. No other sail numbers or letters may be displayed. This changes RRS G1.1 and Class Rules.
- 3.3. SKUD18 boats shall arrive with a National Flag gennaker as specified in the Equipment Regulations.
- 3.4. [DP] While afloat, athletes shall be required to wear bibs provided by the Organising Authority displaying their national country code on the outside of all other clothing and equipment except briefly while changing or adjusting clothing or personal equipment.

4. ELIGIBILITY, QUALIFICATION AND ENTRY

- 4.1. Athletes and support team members shall comply with the IPC Handbook, as well as with the World Sailing rules, in order to be eligible for participation in the Rio 2016 Paralympic Sailing Competition, and shall be entered by a National Paralympic Committee (NPC).
- 4.2. Each athlete shall be a national of the country of the NPC that is entering him or her. An athlete's nationality shall be determined in accordance with IPC Policy, as set out in the IPC Handbook.
- 4.3. Each athlete shall have competed in an official Para World Sailing or IFDS sanctioned regatta between 1 January 2014 and 30 June 2016;
- 4.4. Each athlete shall be internationally classified either with a 'Confirmed' sport class status or a 'Review' sport class status with a review date after 31 December 2016.
- 4.5. World Sailing Eligibility according to World Sailing Regulation 19 is required of all athletes.
- 4.6. Each athlete shall be registered as a World Sailing sailor on the World Sailing website.
- 4.7. Each NPC shall confirm use of qualification places to World Sailing by 1 March 2016.
- 4.8. Final entries shall be submitted by the NPC and shall be received by the Organising Authority no later than 15 August 2016. No substitution of athletes shall be allowed after this date except as permitted by the Late Athlete Substitution Policy (Appendix 6 of the Memorandum of Understanding between World Sailing, IPC and Rio 2016). This changes RMM 7.
- 4.9. Each NPC may enter a maximum of one entry per event.
- 4.10. The maximum number of entries ('entry quota') for each of the three Paralympic Sailing events is set out in the following table, based on a total of 80 athletes:

MAXIMUM ENTRIES PER EVENT		
Event	Class	Event Entry Quota
Single-Person Keelboat	2.4 Norlin OD	16
Two-Person Keelboat	SKUD18	11
Three-Person Keelboat	Sonar	14

4.11. World Sailing may modify the entry quota for an individual event, in consultation with Rio 2016 and the IPC, provided that the total number of 80 athletes is not exceeded.

5. ACCREDITATION TEAM CONFIRMATION AND REGISTRATION

- 5.1. Only accredited athletes and support team members shall have access to the venue. Accreditation will be managed through NPCs.
- 5.2. Team leaders shall complete a team confirmation form at the Sport Information Desk between 01 August and 11 September 2016 inclusive in order to confirm the team information provided at the Delegation Registration Meeting (DRM). This form must be completed and returned to the Sport Information Desk by 1000 on 11 September.
- 5.3. Support team members shall complete a registration form at the Sport Information Desk between 31 August and 11 September 2016 inclusive. Support team members shall register either before leaving the Paralympic marina in a support boat for the first time or by 1000 on the day before the first race of the event that it is supporting, whichever is the earlier.

6. FORMAT

- 6.1. The sailing competition will consist of a series of 11 races for each event.

7. SCHEDULE

- 7.1. The schedule is as follows:

SCHEDULE		
Date	Time	
31 August	1200	Venue opens
1 – 10 September	1000 - 1700	Athlete Registration
11 September	Until 1000	Athlete Registration
31 August – 11 September	1000 - 1700	Support Team Registration
31 August – 10 September	1100 - 1700	On-water training
4-6 September	TBA	Vision Classification of late replacements
7 September	1900	Rio 2016 Opening Ceremony
8 – 10 September	0900 - 1800	Equipment Inspection
9 September	1000 - 1700	Classification of late replacements
10 September	1700	Deadline for Launching
11 September	1300	Practice Races – 1st warning signal
12 – 16 September	1300 daily *	Competition Days – 1st warning signal
17 September	1200*	Competition Day first warning signal
17 September	1700	Medal Ceremony
18 September	1900	Rio 2016 Closing Ceremony

* The Organising Authority may schedule races to start before the scheduled time.
The Sailing Instructions will define the process for re-scheduling a race.

- 7.2. The competition schedule is shown in Appendix 1.
- 7.3. Two races per day are scheduled for each event from 12 to 16 September, with one race per event scheduled for 17 September.
- 7.4. The Sailing Instructions will define the process for the publication of the daily race schedule, including the allocation of events to course areas.
- 7.5. Due to weather conditions, up to one extra race per day may be sailed, with no event being more than one race ahead of its schedule.
- 7.6. No warning signal will be made after 1700 on 12-16 September and not after 1530 on 17 September.
- 7.7. From 11-17 September there will be a daily team leaders' meeting at 1000.

8. VENUE

- 8.1. The Sailing competition will take place at the Marina da Glória, Rio de Janeiro. The venue is shown in Appendix 2.
- 8.2. The venue will be open as follows:

DATE	OPENING TIME	CLOSING TIME
31 August	1200	1800
1 to 6 September	0900	1800
7 September	0900	1100
8 -11 September	0900	1800
12 – 17 September	0830	2000

- 8.3. The racing area will be in and outside Guanabara Bay. The latitude/longitude positions of the centre of the course areas will be as shown in the table below. However, racing may also be moved to other locations within an exclusion zone. The racing area is shown in Appendix 3.

COURSE AREA LOCATIONS		
Course Area	Latitude	Longitude
Pão de Açúcar	22° 55' 55.51.5"S	43° 09' 37.40.20"W
Escola Naval	22° 55' 14.39"S	43° 08' 50.20"W
Copacabana	22° 58' 02.4"S	43° 08' 04.20"W

9. COURSES

- 9.1. The courses will be Windward/Leeward or Trapezoid with optional finishing legs.
- 9.2. The target times in minutes are:

EVENT	TARGET TIME	TIME LIMIT
Single-Person Keelboat	50	75
Two-Person Keelboat	60	90
Three-Person Keelboat	65	100

10. PENALTY SYSTEM

For the Two-Person keelboat event RRS 44.1 and RRS P2.1 are changed so that the Two-Turns Penalty is replaced by the One-Turn Penalty.

11. INTERNATIONAL JURY

An international jury will be appointed in accordance with rule 91(b). Its decisions will be final as provided in RRS 70.5.

12. SCORING

- 12.1. RRS Appendix A will apply.
- 12.2. One race is required to be completed to constitute a series.
- 12.3. When fewer than five races have been completed, no score shall be excluded.

13. EQUIPMENT AND EQUIPMENT INSPECTION

- 13.1. The Rio 2016 Equipment Limitations are shown in Appendix 4.
- 13.2. Each boat in all events shall produce or verify the existence of a valid measurement certificate. RRS 78.2 is deleted and replaced by: When a rule requires a valid certificate to be produced or its existence verified the certificate must be produced before the boat races. If the certificate is not produced or verified before the boat races the boat shall be disqualified from all races of the event.
- 13.3. This event is an international event for the purpose of RRS G1.1.
- 13.4. Boats shall be available for inspection in accordance with the Equipment Regulations.
- 13.5. The procedures for inspections will be specified in the Sailing Instructions or the ER.
- 13.6. Class rules regarding class association membership will not apply.

14. SUPPORT TEAMS (INCLUDING SUPPORT BOATS)

- 14.1. By registering as a support person and receiving accreditation, each such person agrees to be governed by the rules.
- 14.2. A support boat includes any boat that is under the control or direction of a person who is providing physical or advisory support to an athlete, including the gathering of data that may be used at a later time.
- 14.3. No more than one support boat per NPC per event entered may be registered.
- 14.4. Support boats shall be registered at the Sport Information Desk either before leaving the marina for the first time or by 1800 on the day before the first race of the event that it is supporting, whichever is earlier.
- 14.5. Support boats shall display the 3 letter code of their World Sailing Member National Authority at all times while afloat clearly visible from both sides of the boat. The minimum height for the letters shall be 200 mm.
- 14.6. The Organising Authority may, at its discretion refuse support boats entry to the venue if they are deemed unsuitable. Generally, open boats less than 7.5 metres in length, having minimum or no superstructure (cabin, coach house, bridge etc.), will be considered suitable.
- 14.7. Limitations of equipment that may be carried and mandatory equipment that shall be carried on support boats will be confirmed in the Support Team Regulations.

15. [DP] BERTHING

Boats moored or ashore shall be kept in their assigned places.

16. CLASSIFICATION

16.1. Classification of approved late replacements will be undertaken on 9 September 2016. Vision classification of approved late replacements will be undertaken between 4-6 September. The time and location for individual classification will be posted on the ONB.

17. RADIO COMMUNICATIONS

Except in an emergency or using equipment provided by the Organising Authority, a boat shall not make or receive radio transmissions including text messages or cellular phone calls while racing, except as provided for in RMM 6.5.

18. PRIZES

18.1. The medals and diplomas for each event in the Rio 2016 Paralympic Sailing Competition will be awarded as follows:

- 18.1.1 First prize will be a gold medal and diploma.
- 18.1.2 Second prize will be a silver medal and diploma.
- 18.1.3 Third prize will be a bronze medal and diploma.
- 18.1.4 Prizes for 4th to 8th places will be diplomas.

19. DOPING CONTROL

19.1. During the period of the Paralympic Games, which starts on 31 August 2016 and ends on 18 September 2016, the IPC Anti-Doping Rules (compliant with the World Anti-Doping Code and the mandatory International Standards) will apply.

19.2. Rio 2016 will be authorised to collect samples on behalf of the IPC. The doping control station will be located at on the upper floor of the “Badejão” restaurant, east of the Main Building.

20. [DP] MEDIA RIGHTS, CAMERAS AND ELECTRONIC EQUIPMENT

20.1. Athletes shall comply with the AMG. The AMG will include further information on television production, tracking, press conferences, interviews and promotion of the regatta.

20.2. By participating in the event, athletes and support teams automatically grant to the Organising Authority, their sponsors and World Sailing the right in perpetuity to make, use and show, from time to time at their discretion, any motion pictures and live, taped or filmed television and other reproductions of the athlete during the period of the competition without compensation.

20.3. Boats may be required to carry cameras, camera dummies, mounts, sound equipment or positioning equipment as specified by the Organising Authority.

20.4. Athletes shall pass through the mixed zone on return to shore after racing.

20.5. All medallists shall be required to attend a media conference after the final race. Athletes may also be required to attend a media conference at the end of the day's racing.

20.6. Athletes may also be asked to be available for interviews outside the formal mixed zone and media conferences, on either training or competition days.

21. [NP] INSURANCE

21.1. Each ‘person in charge’ (see RRS 46) shall hold a valid insurance certificate showing proof of third-party liability coverage of at least US\$ 1,500,000 (or equivalent) per incident.

21.2. Each support boat shall have valid insurance including third party liability coverage of at least US\$ 1,500,000 (or equivalent) per incident.

21.3. The Organising Authority is not responsible for verifying the status or validity of certificates.

22. RISK STATEMENT

Athletes and support teams participate in the regatta entirely at their own risk and they are reminded of the provisions of RRS 4, Decision to Race. Sailing is by its nature an

unpredictable sport and therefore involves an element of risk. By taking part in the event, each athlete and support team member agrees and acknowledges that:

- 22.1. They are aware of the inherent element of risk involved in the sport and accept responsibility for the exposure of themselves, their crew and the boat to such inherent risk whilst taking part in the event;
- 22.2. They are responsible for the safety of themselves, their crew, their boat and their other property whether afloat or ashore;
- 22.3. They accept responsibility for any injury, damage or loss to the extent caused by their own actions or omissions;
- 22.4. By participating in any race, they are satisfied that their boat is in good order, equipped to sail in the event and they are fit to participate;
- 22.5. The provision of a race management team, patrol boats, umpires and other officials and volunteers by the organiser does not relieve them of their own responsibilities;
- 22.6. The provision of patrol boat cover is limited to such assistance, particularly in extreme weather conditions, as can be practically provided in the circumstances.

23. AMENDMENTS TO THE NOTICE OF RACE

This Notice of Race may be changed. Changes will be posted on the World Sailing website and on the Official Notice Board.

24. FURTHER INFORMATION Contact Details

E-mail: sailing@rio2016.com



NOR APPENDIX 1

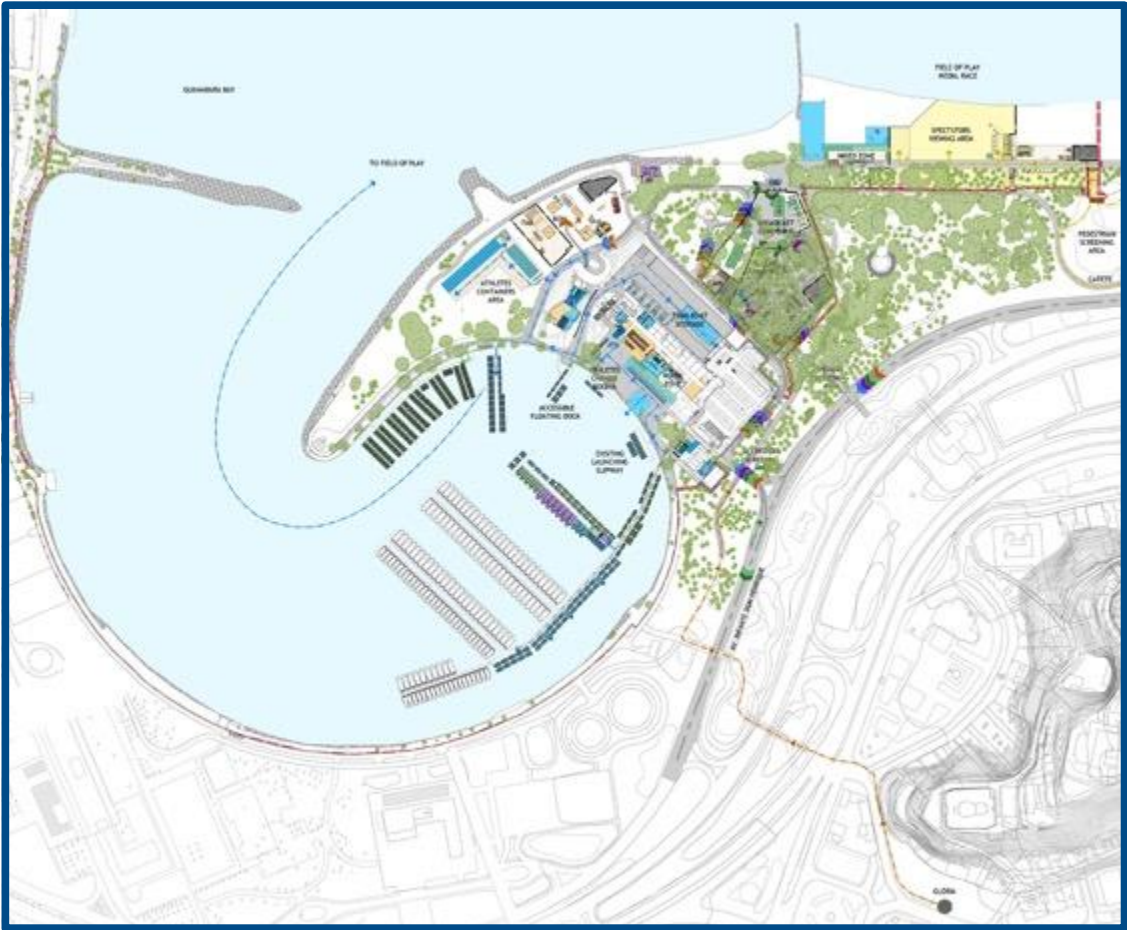
COMPETITION AND EQUIPMENT INSPECTION SCHEDULE

EVENT	SINGLE-PERSON KEELBOAT	TWO-PERSON	THREE-PERSON
4-6 September	Vision Classification of late replacements	Vision Classification of late replacements	Vision Classification of late replacements
8 September	Equipment Inspection	Equipment Inspection	Equipment Inspection
9 September	Classification of late replacements	Classification of late replacements	Classification of late replacements
	Equipment Inspection	Equipment Inspection	Equipment Inspection
10 September	Equipment Inspection	Equipment Inspection	Equipment Inspection
11 September	Practice Race	Practice Race	Practice Race
12 September	Two Races	Two Races	Two Races
13 September	Two Races	Two Races	Two Races
14 September	Two Races	Two Races	Two Races
15 September	Two Races	Two Races	Two Races
16 September	Two Races	Two Races	Two Races
17 September	One Race	One Race	One Race



NOR APPENDIX 2

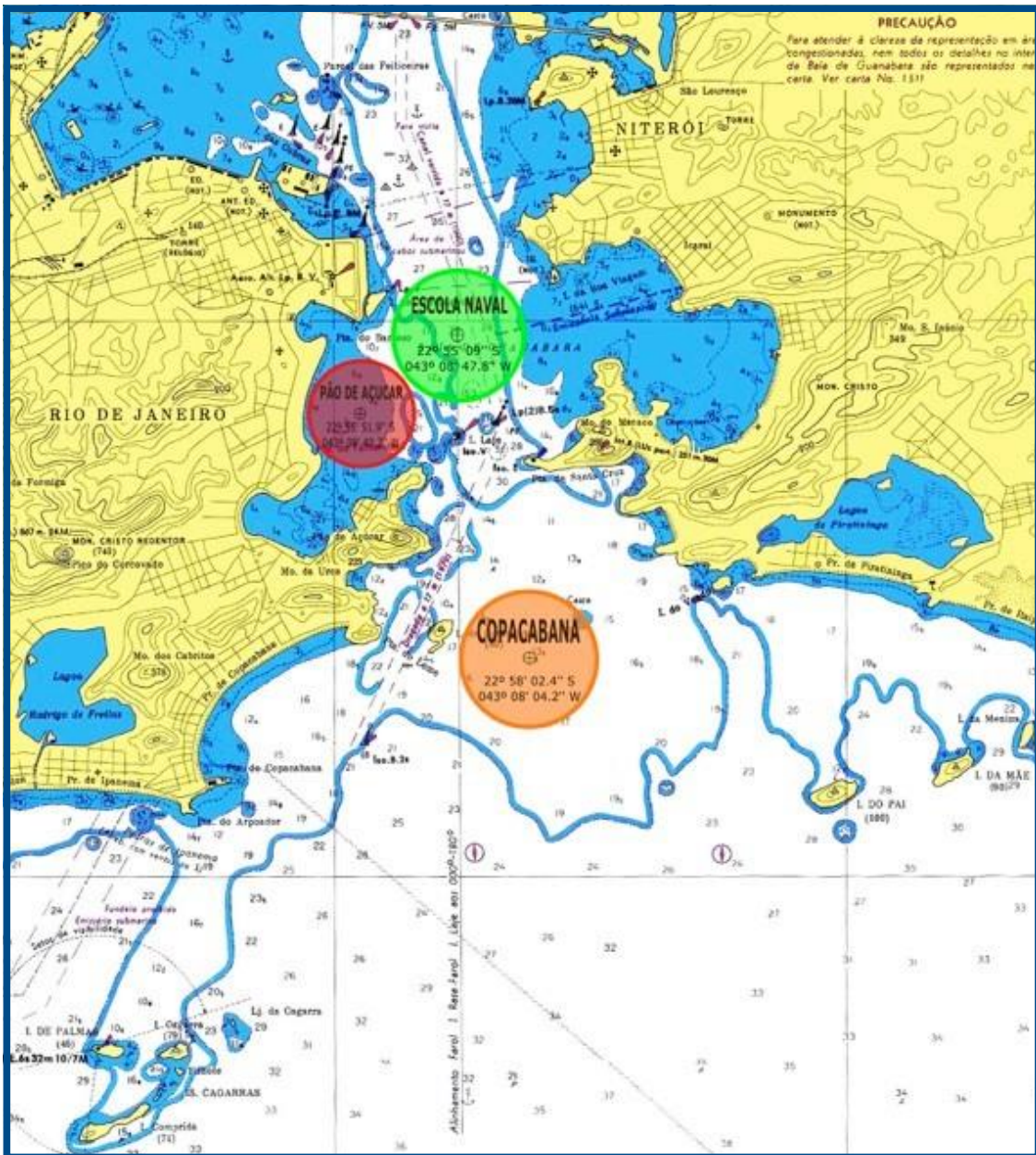
MARINA DA GLÓRIA VENUE





NOR APPENDIX 3

RACING AREAS





NOR APPENDIX 4

RIO 2016 EQUIPMENT LIMITATIONS

In addition to the applicable equipment limitations within the Class Rules the following equipment limitations apply at the Rio 2016 Paralympic Games:

1. SINGLE-PERSON KEELBOAT – 2.4 NORLIN ONE DESIGN

1.1. Class rule C8.3 and E2.3 (b) shall not apply. Small standard rudders are not permitted.

2. TWO-PERSON KEELBOAT – SKUD 18

2.1. The Equipment Regulations will limit the supplier of gennakers.

3. THREE-PERSON KEELBOAT - SONAR

3.1. No changes to class rules

03.2016

This material shall not be duplicated by any means, except with prior and express consent (in writing) from the Organising Committee for the Rio 2016 Olympic and Paralympic Games. Authorizations for copy should be submitted by mail to brandprotection@rio2016.com

Rio 2016 Organising Committee for
the Olympic and Paralympic Games

rio2016.com